

The Measuring Gauge:

The piece of 1x2 was jointed to make sure it was flat and a 1/4" hole drilled in it to accommodate a piece of dowel, which was carefully marked with 1/8" increments while it was turning on a wood lathe. Each picture attached has the measuring gauge and an identifying number from the map in it.



On Centre Road north of the bend above the 11th, on the East side there are two bore holes adjacent to each other. Bore hole 1 is marked with orange paint and a stake and the other (BH42) is just a few feet south of B1. BH 1 has a depression depth of 1/8" and BH 42 is a bit over 1/4" at the deepest part.





BH 43 is on the west side of Centre Road just at the bend north of the 11th. The depth is about 1/8"



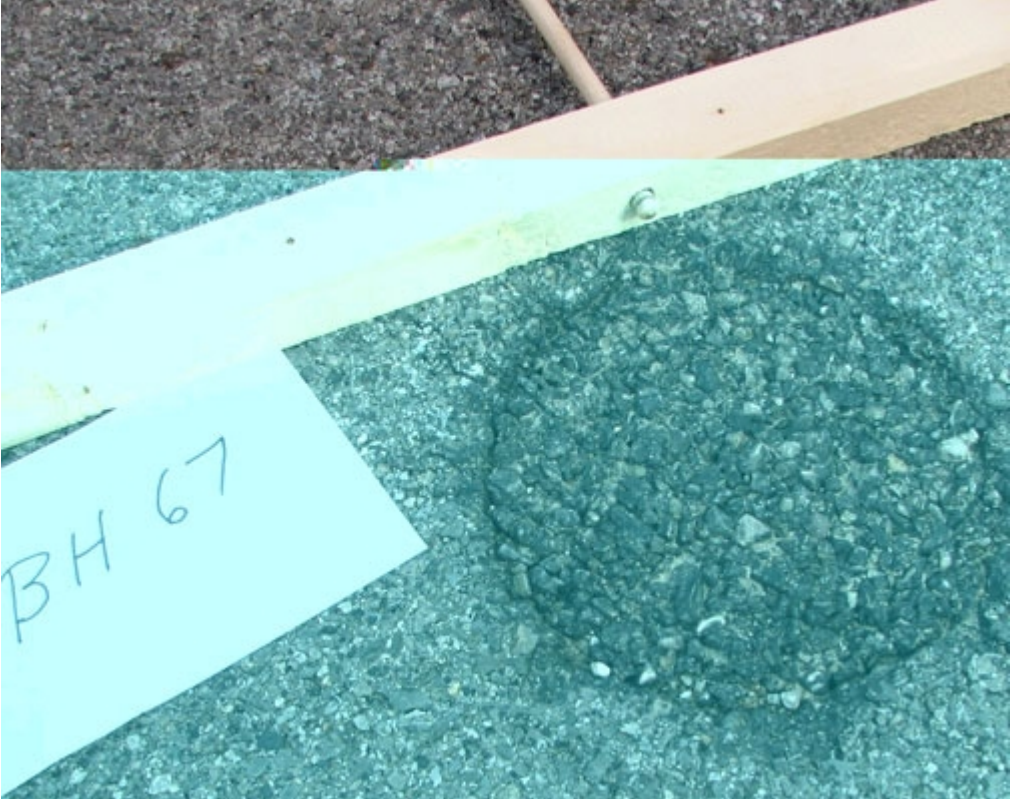
BH 71 is on the north side of the 11th between Stonebury and Centre Road. This was originally found full of water when the road was damp. The patch for it is extremely coarse and the depth over 1/4" at the shallowest point. The edge has lots of places to hold moisture for winter freeze/thaw action.



BH 66 is on the south side of the 11th west of Milborough Line with a depression greater than 1/4" and lots of water catching voids on the perimeter.



BH 67 is on the North Side of the 11th west of Milborough about half way to the property gates. It has a depression of almost 1/4".



BH 68 is on the south side of the 11th, almost directly across from the property gates. The depression is in excess of 1/4".



Lastly is BH 76 on the south side of the 11th just east of Highway 6. It has ragged edges and a depression of about 3/16"

